




lomond

make yourself a home

12 Frew Terrace, Irvine KA12 9EA

Accommodation

12 Frew Terrace is a mid terrace villa offering family sized accommodation over two levels. The accommodation comprises lounge/ diner, three bedrooms, kitchen and family bathroom. Externally the property comes with private gardens to the front and rear, and off street parking to the front. The property has recently undergone a series of upgrades including new kitchen, bathroom, and boiler.

In greater detail the entrance hallway has stairs rising to the upper level. The lounge / diner stretches the full length of the property with French doors to the garden. The décor is modern with feature wall providing a focal point to the room. The kitchen has been fitted within the last year, now providing ample space with both floor and wall mounted units, with integrated hob, oven and hood. Access to the garden can be gained via the kitchen.

The upper level houses three bedrooms, and the family bathroom. The bathroom is new with bath, electric over shower, WC and WHB, all finished to modern wet wall panels. All bedrooms are double in size with Bedroom 3 currently being utilised as a working from home office.

Externally the property has off street parking to the front and gardens to the rear. The gardens are easily maintained, laid to a combination of lawn, and patio slabbing.

Situation

Frew Terrace is a sought-after residential area with easy reach of Irvine Town Centre. The town centre provides access to a range of amenities including supermarkets, bars, restaurants and town centre shopping. There are a number of local primary and secondary schools within the area.

- Mid Terrace Villa
- Three Bedrooms
- Spacious Lounge/ Diner
- Off Street Parking
- New Kitchen
- New Bathroom
- New Boiler



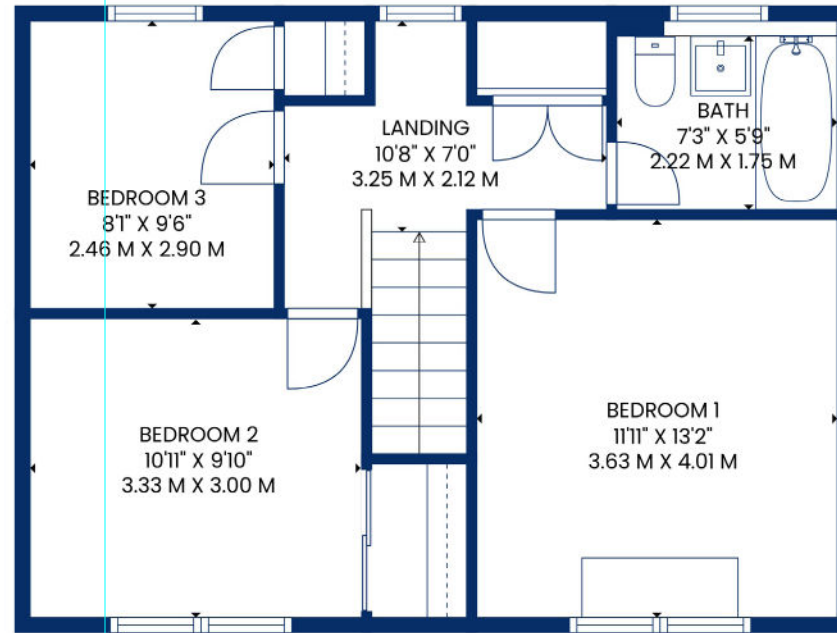
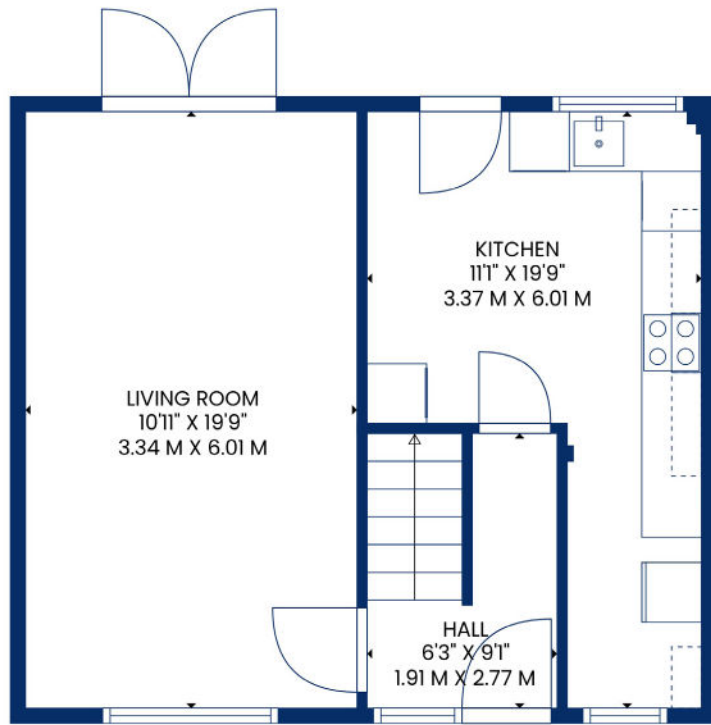
 3 Bedrooms

 88 sqm

 2 Public Rooms

 EPC Rating C





51 Main Street, Prestwick
01292 471511



52 Bank Street, Irvine
01294 317013



Any error, omission, or misstatement in any part of this schedule shall not entitle the purchaser(s) or vendor(s) to entitlement to compensation or damages, nor in circumstances to give either party any cause for action. The selling agents have not tested services, equipment or fittings and are therefore unable to comment on their condition. Potential buyers are requested to contact their solicitor or surveyor if further clarification is required. Measurements are approximate for guidance purposes only and have been taken by a sonic beam and are measured from wall to wall at the widest point unless otherwise indicated. Photographs are reproduced for general information and it must not be inferred that any item is included in the sale.