



  
**lomond**  
make yourself a home

15 Garden Street, Coalburn ML11 0LJ



## Accommodation

Located in the popular village of Coalburn just 20 miles from Glasgow, 15 Garden Street is a modern villa offering family sized accommodation over two levels. The property comprises three bedrooms, open plan lounge to diner, kitchen, family bathroom and downstairs WC. Externally there is residents parking to the front and private gardens to the rear.

In greater detail the layout extends to entrance hallway with WC, stairs to the upper level and storage cupboard. The lounge /dining stretches the entire length of the property with French doors from lounge to dining area and patio doors from the dining area to garden. The kitchen comes well stocked with a number of floor and wall mounted units, with integrated electric hob, oven and hood.

The upper level houses three bedrooms, two of which are double in size and a family bathroom. Bedroom 1 benefits from full length fitted wardrobes, and a en suite shower room.

Externally to the rear the garden is laid to lawn with patio slabbing and perimeter fencing.

## Situation

Garden Street is a small village located just 20 miles from Glasgow with excellent road networks to the city. Coalburn itself offers typical village shopping with a major supermarket situated just miles away. There are a number of primary and secondary schools within the area.

- Semi Detached Villa
- Three Bedrooms
- Resident Parking
- Private Garden
- Downstairs WC
- EnSuite



 3 Bedrooms

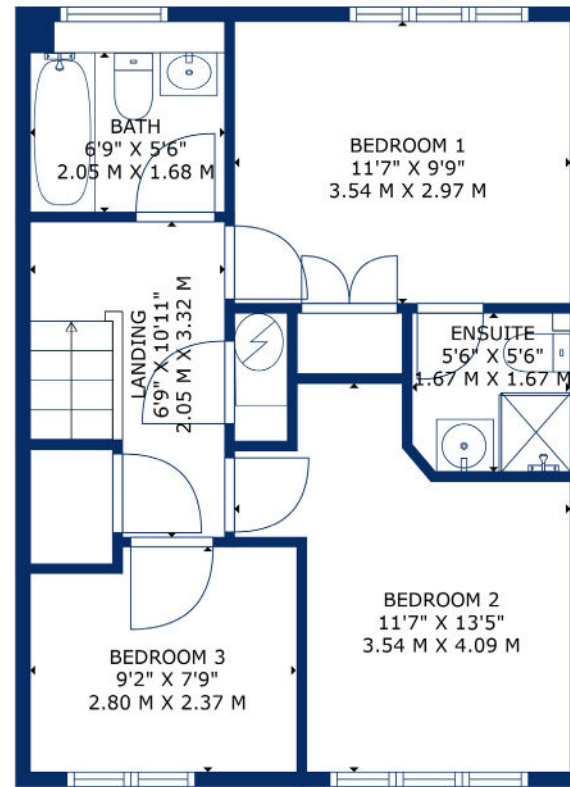
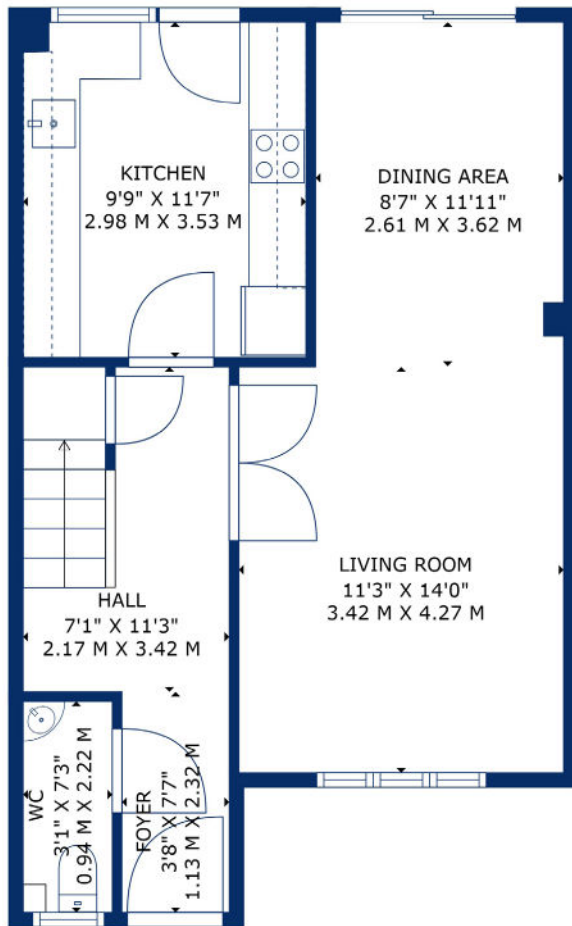
 92 sqm

 2 Public Rooms

 EPC Rating C







FLOOR 2



 **51 Main Street, Prestwick**  
**01292 471511**

 **52 Bank Street, Irvine**  
**01294 317013**



Any error, omission, or misstatement in any part of this schedule shall not entitle the purchaser(s) or vendor(s) to entitlement to compensation or damages, nor in circumstances to give either party any cause for action. The selling agents have not tested services, equipment or fittings and are therefore unable to comment on their condition. Potential buyers are requested to contact their solicitor or surveyor if further clarification is required. Measurements are approximate for guidance purposes only and have been taken by a sonic beam and are measured from wall to wall at the widest point unless otherwise indicated. Photographs are reproduced for general information and it must not be inferred that any item is included in the sale.