



  
**lomond**  
make yourself a home

19 Porting Cross Place, Kilmarnock KA3 6FD

## Accommodation

Larger style four bedroom detached villa within a popular cul de sac in the heart of the popular Southcraigs development at the north end of Kilmarnock. The property enjoys a pleasant outlook at the rear with a completely private situation benefitting from all day long sunshine within different areas of the garden and a flexible layout of accommodation internally.

## Situation

Southcraigs is a highly desirable residential development located in Kilmarnock, Ayrshire. The development features a mix of modern detached, semi-detached and terraced properties, surrounded by beautifully landscaped gardens and parks. The surrounding area boasts excellent transport links, making it easy to reach Glasgow City centre and other nearby towns. The development is also close to a range of amenities, including shops, schools, and recreational facilities, providing everything residents need for a comfortable and convenient lifestyle. Finally, the beautiful countryside walks and parks in the area offer residents the opportunity to enjoy nature and get some fresh air.



- Detached Villa within a Quiet Cul De Sac
- Fully Upgraded En Suite Shower Room
- Four Bedrooms all With Built in Wardrobes
- Family Bathroom and Downstairs WC & Cloakroom
- Stylish Newly Fitted Kitchen with Built In Appliances
- Driveway Parking with Integrated Garage
- Bright Lounge with Recently Replaced French Doors to Garden
- Well Maintained Rear Garden with Pleasant Wooded Backdrop
- Formal Dining Area To The Front

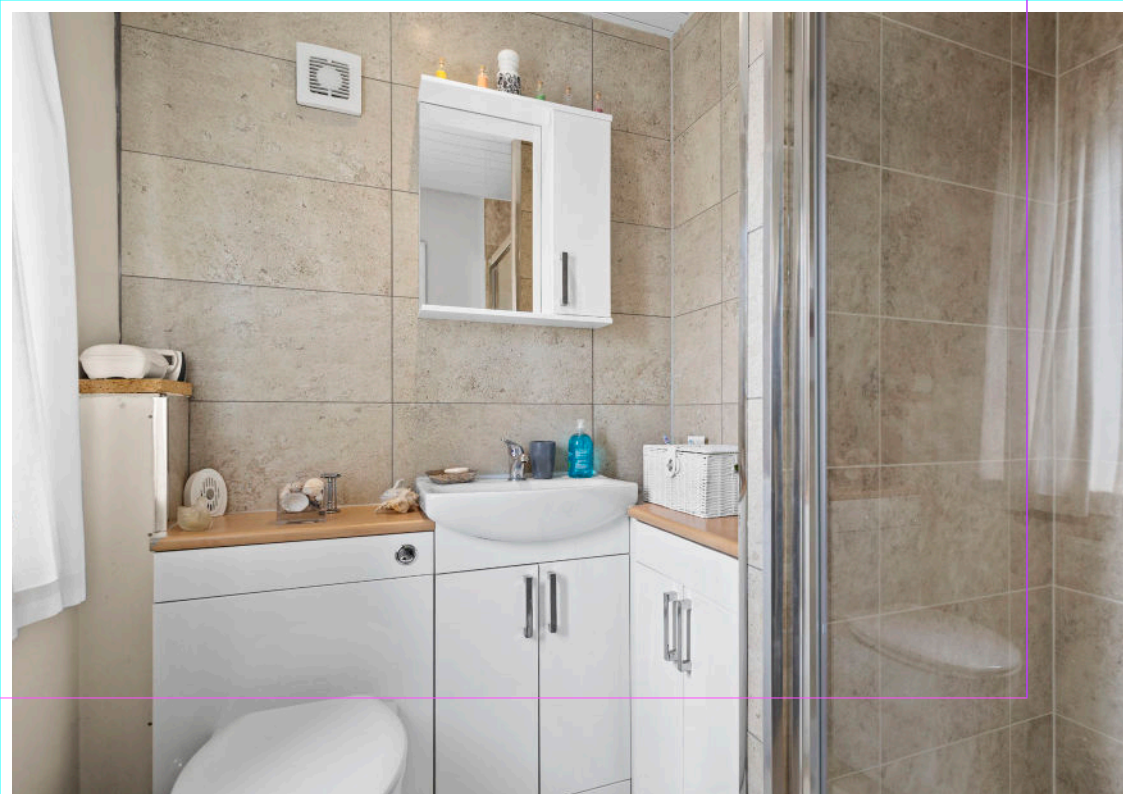


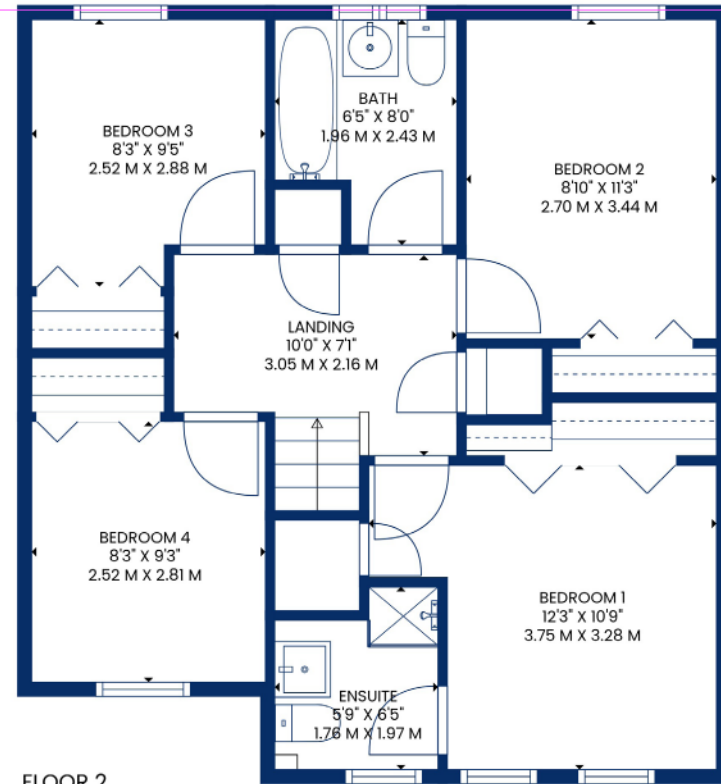
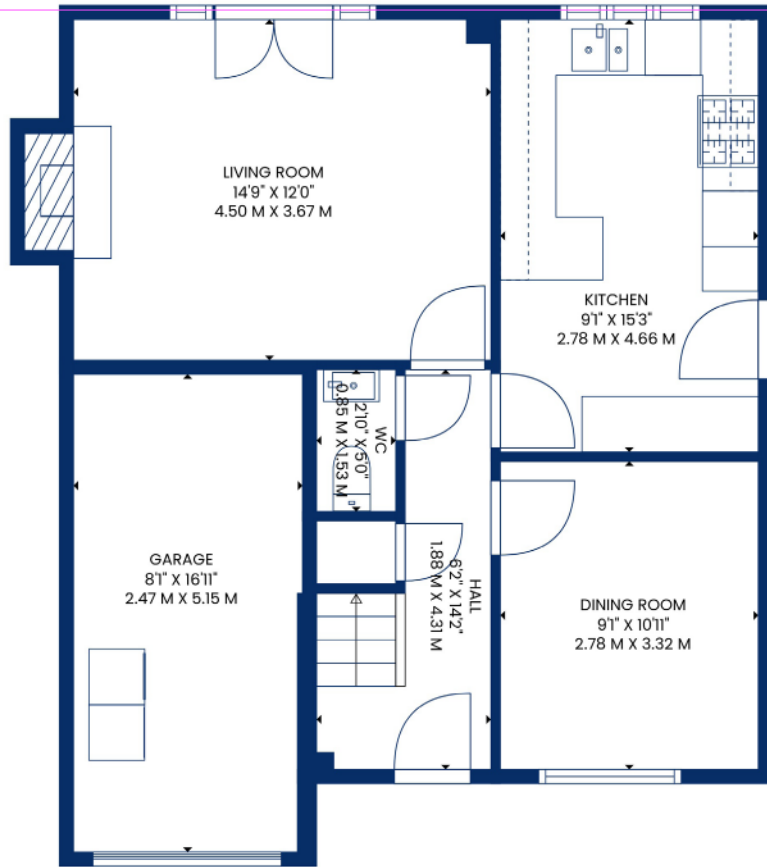
 4 Bedrooms

 105 sqm

 2 Public Rooms

 EPC Rating C





FLOOR 2

**lomond**  
make yourself a home



51 Main Street, Prestwick  
01292 471511



52 Bank Street, Irvine  
01294 317013



Any error, omission, or misstatement in any part of this schedule shall not entitle the purchaser(s) or vendor(s) to entitlement to compensation or damages, nor in circumstances to give either party any cause for action. The selling agents have not tested services, equipment or fittings and are therefore unable to comment on their condition. Potential buyers are requested to contact their solicitor or surveyor if further clarification is required. Measurements are approximate for guidance purposes only and have been taken by a sonic beam and are measured from wall to wall at the widest point unless otherwise indicated. Photographs are reproduced for general information and it must not be inferred that any item is included in the sale.