



make yourself a home

23 Craighall Crescent

23 Craighall Crescent

Signature

[www.lomondproperty.com](http://www.lomondproperty.com)



Tucked away perfectly in a corner position with extensive driveway parking, a sunny rear garden and a fantastic layout of family accommodation including a beautiful open plan kitchen family space.

*Craig Robertson*  
Director





The property is well positioned within the popular Westlin Walk development by the highly regarded Barratt Homes and is conveniently situated on the bus route linking with both the town centre of Kilmarnock and Glasgow City Centre.

- Four bedroom executive detached villa
- Open plan stylish kitchen incorporating dining and family room
- Formal lounge and additional home office/play room
- Four double bedrooms, master with en-suite shower room
- Family bathroom and downstairs WC as well as a handy utility room
- Extensive monoblock driveway parking with detached garage
- Fully enclosed rear gardens with patio and lawn area
- Gas central heating and double glazing





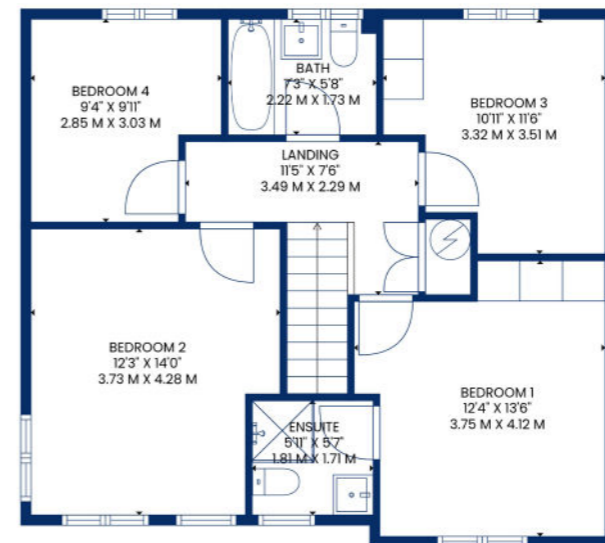
[www.lomondproperty.com](http://www.lomondproperty.com)



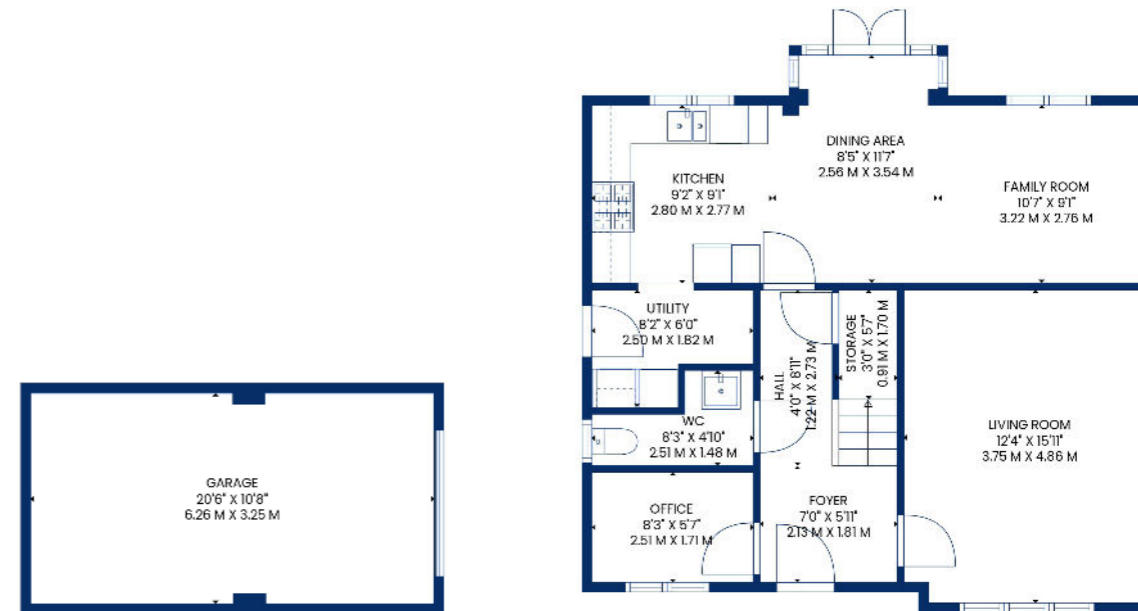
## 23 CRAIGHALL CRESCENT

KILMARNOCK, KA3 6GQ





SECOND FLOOR



FIRST FLOOR



## Situation

Westlin Walk is a highly desirable residential development located in the North part of Kilmarnock, Ayrshire. The development features a mix of modern properties, surrounded by beautifully landscaped gardens and parks. The surrounding area boasts excellent transport links, making it easy to reach Glasgow City centre and other nearby towns with the bus stop a short stroll from the front door taking you to Glasgow City Centre in less than 45 minutes. The development is also close to a range of amenities, including shops, schools, and recreational facilities, providing everything residents need for a comfortable and convenient lifestyle. Finally, the beautiful countryside walks and parks in the area offer residents the opportunity to enjoy nature and get some fresh air.

For Sat Nav purposes the postcode is **KA3 6GN**

EPC rating: **B**

Council tax band:

SQM: **128**

Prestwick **01292 471511** | Irvine **01294 317013** | Kilmarnock **01563 593560**

[www.lomondproperty.com](http://www.lomondproperty.com)

Any error, omission, or misstatement in any part of this schedule shall not entitle the purchaser(s) or vendor(s) to entitlement to compensation or damages, nor in circumstances to give either party any cause for action. The selling agents have not tested services, equipment or fittings and are therefore unable to comment on their condition. Potential buyers are requested to contact their solicitor or surveyor if further clarification is required. Measurements are approximate for guidance purposes only and have been taken by a sonic beam and are measured from wall to wall at the widest point unless otherwise indicated. Photographs are reproduced for general information and it must not be inferred that any item is included in the sale.