




lomond
make yourself a home

24 Earlswood Wynd, Irvine KA11 2FF

Accommodation

Perfectly suited to the modern family craving generous living space and flexibility, 24 Earlswood Wynd is located in the hugely popular Montgomerie Park area of Irvine. This gorgeous villa is ideally positioned within close proximity to the local schools, with the soon to be newly opened primary school just a short walk away. The property is located on a generous corner plot with double garage and is one of a just a few houses within this estate to come with its very own sun room. The nearby Eglinton Park provides an excellent option for those seeking outdoor space. I

Into more detail the entrance hallway immediately gives that feeling of space. The formal lounge is front facing with feature bay window providing plenty of natural light. The fireplace provides a lovely focal point with modern stylish décor creating a lovely atmosphere throughout. The dining room is open plan to the lounge (the owner has the French doors so could be easily reinstated) providing a more formal feel to meal times. The kitchen has had a recent upgrade providing breakfast bar space, with ample floor and wall mounted units, integrated appliances and in turn allows access to the utility room with WC. The sun room offers a more relaxed feel to family times with views and French doors to the garden. The 5th bedroom is located on the ground floor – this space could easily be suited to those working from home.

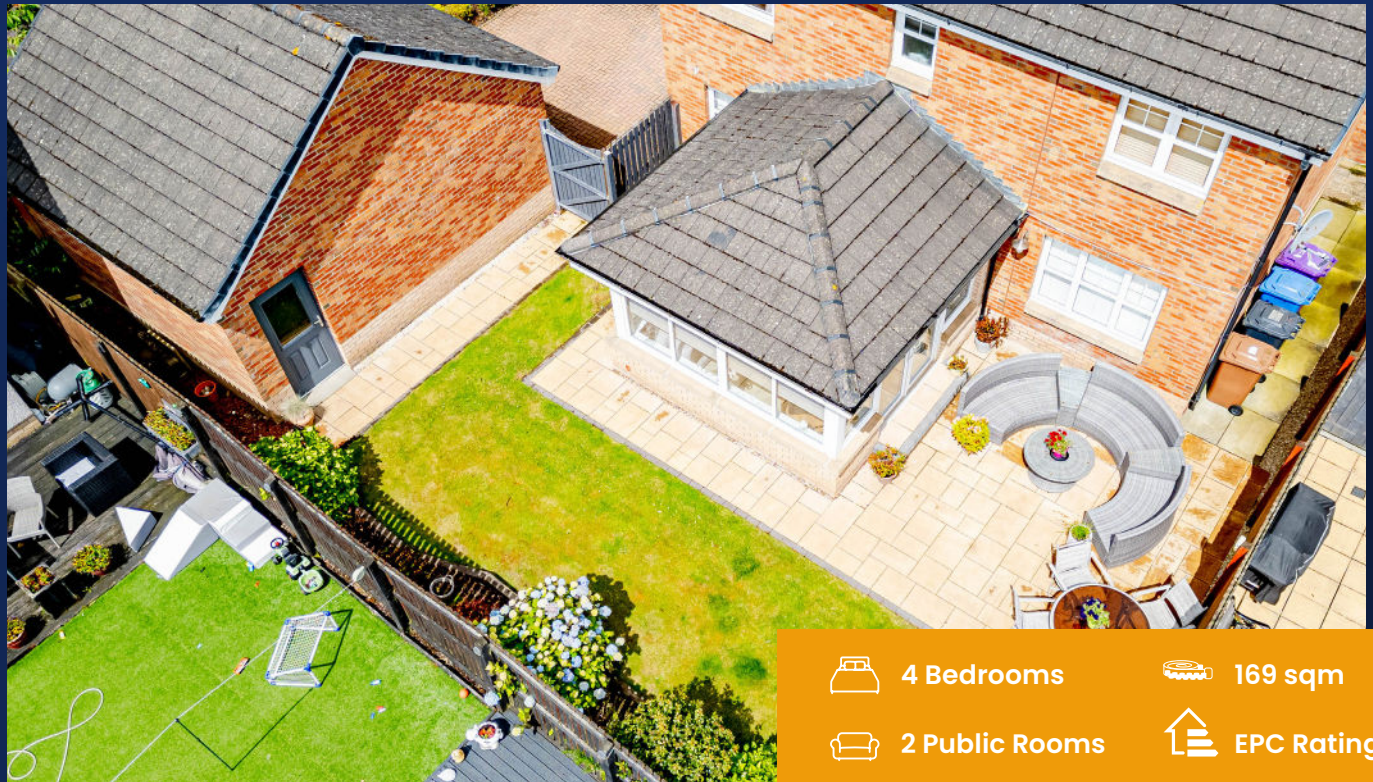
The upper level houses four further bedrooms and the main family bathroom. The master bedroom features a walk in cupboard space and a luxury en suite shower room. Bedroom 2 and 3 features full length fitted wardrobe space and benefits further from a jack n jill shower room. The main bathroom is styling with recently fitted modern tiling, bath, WC and WHB.

Externally the property has parking for 2-3 cars , double garage and easily maintained gardens to the front. To the rear there is small manageable section of lawn with patio area ideal for summer dining.

Situation

Irvine is located in North Ayrshire, just 35 minutes from Glasgow Airport. The town is rich in history with the harbourside area and beach park a popular area with tourists and locals alike. The train station provides a regular service to Ayr, Glasgow and beyond. The town itself provides excellent shopping options. There are a number of primary, secondary schools within the town.

- Detached Villa
- Four /Five Bedrooms
- Flexible Layout
- Off Street Parking
- Double Garage
- En Suite
- Ground Floor WC
- Jack & Jill Esuite

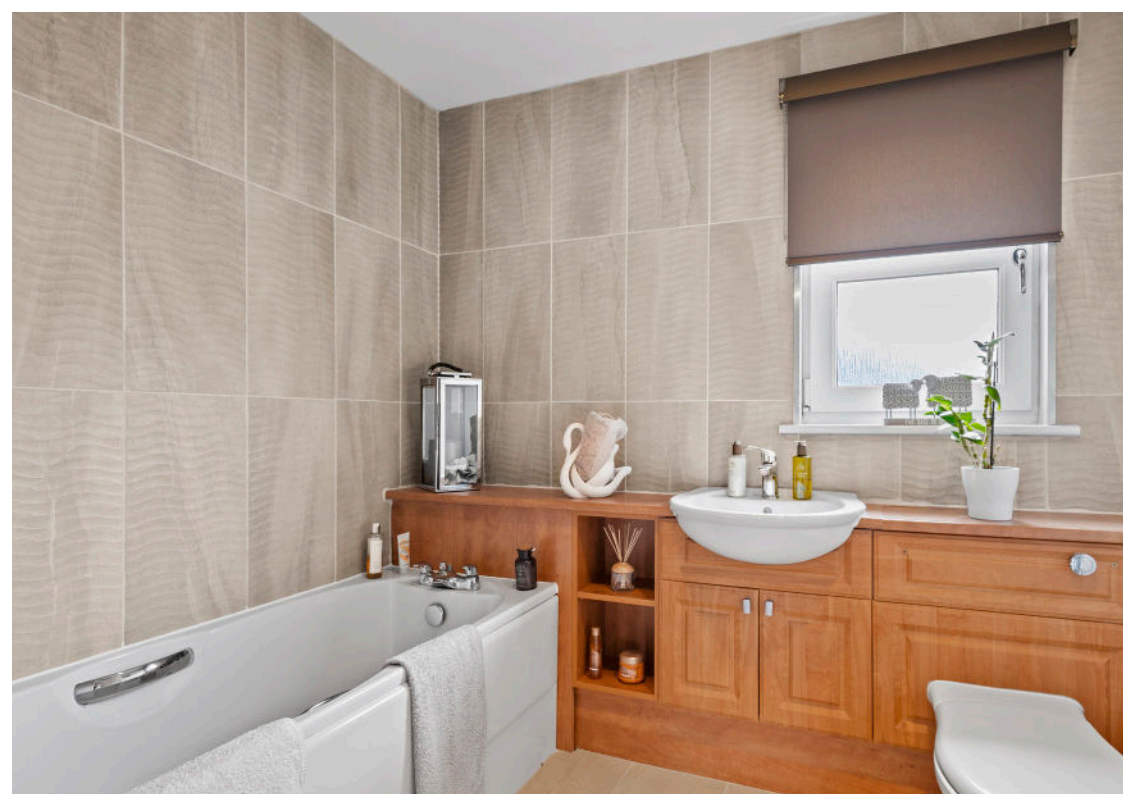


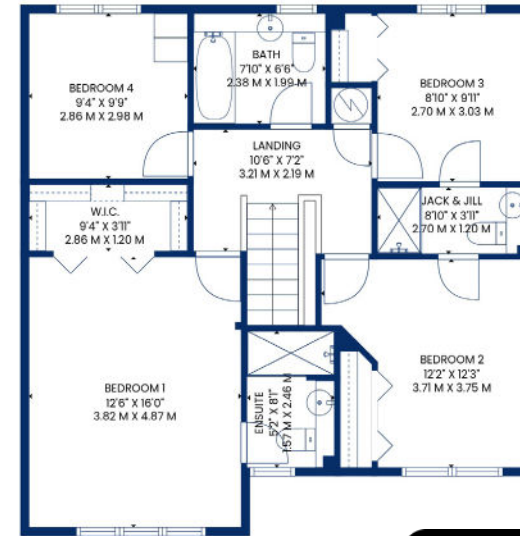
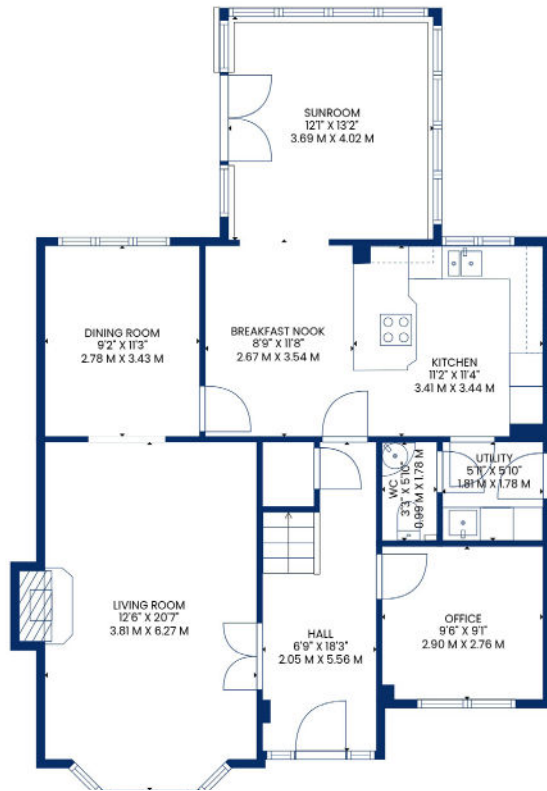
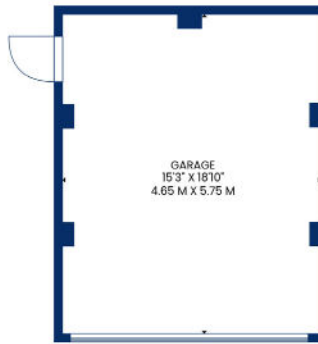
 4 Bedrooms

 169 sqm

 2 Public Rooms

 EPC Rating C





 51 Main Street, Prestwick
01292 471511

 52 Bank Street, Irvine
01294 317013



Any error, omission, or misstatement in any part of this schedule shall not entitle the purchaser(s) or vendor(s) to entitlement to compensation or damages, nor in circumstances to give either party any cause for action. The selling agents have not tested services, equipment or fittings and are therefore unable to comment on their condition. Potential buyers are requested to contact their solicitor or surveyor if further clarification is required. Measurements are approximate for guidance purposes only and have been taken by a sonic beam and are measured from wall to wall at the widest point unless otherwise indicated. Photographs are reproduced for general information and it must not be inferred that any item is included in the sale.