



27
25

lomond

make yourself a home

25 Glebe Crescent, Ayr KA8 8DN

Accommodation

Located in the Newton on Ayr area of Irvine, just a short walk from the train station, 25 Glebe Crescent is a rarely available ground floor flat benefitting further from south west facing gardens, timber decking and parking to the front. Internally the fixtures and fittings are all recent upgrades with some of the improvements being new kitchen, bathroom, and fresh décor and flooring.

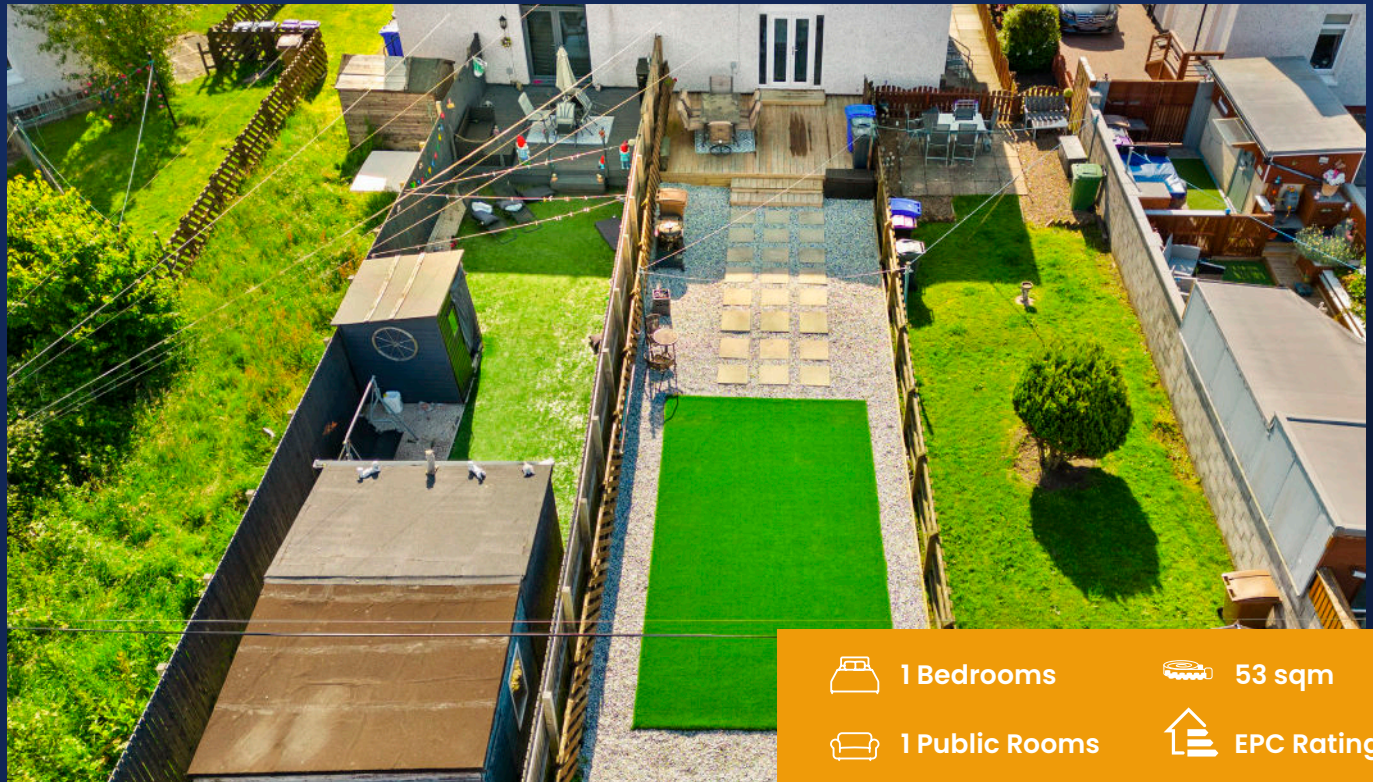
In greater detail a private entry to the side leads to the entrance hallway with two storage cupboards. The lounge / diner is to the rear with fresh modern décor and French doors to the rear garden. The bedroom is spacious; front facing with traditionally high ceilings and stylish décor and tones. The bathroom is a recent upgrade now with walk in shower, with modern fixtures, fittings and tiles. The kitchen is also a recent improvement with modern floor and wall units finished to modern tiling.

Externally the property has off street parking to the front and large private garden access via the French doors off the lounge area. The garden is west facing perfect for enjoying the summer months.

Situation

Glebe Crescent is a residential area with easy reach of Ayr Town Centre. The town centre provides access to a range of amenities including supermarkets, bars, restaurants and town centre shopping. The Newton on Ayr area of Ayr has its very own train station, running on the west coast line from Ayr to Glasgow and beyond.

- Ground Floor Flat
- Double Bedroom
- South West Facing Gardens
- Parking to Front
- Spacious Lounge
- Recently Upgraded Kitchen
- Recently Upgraded Bathroom



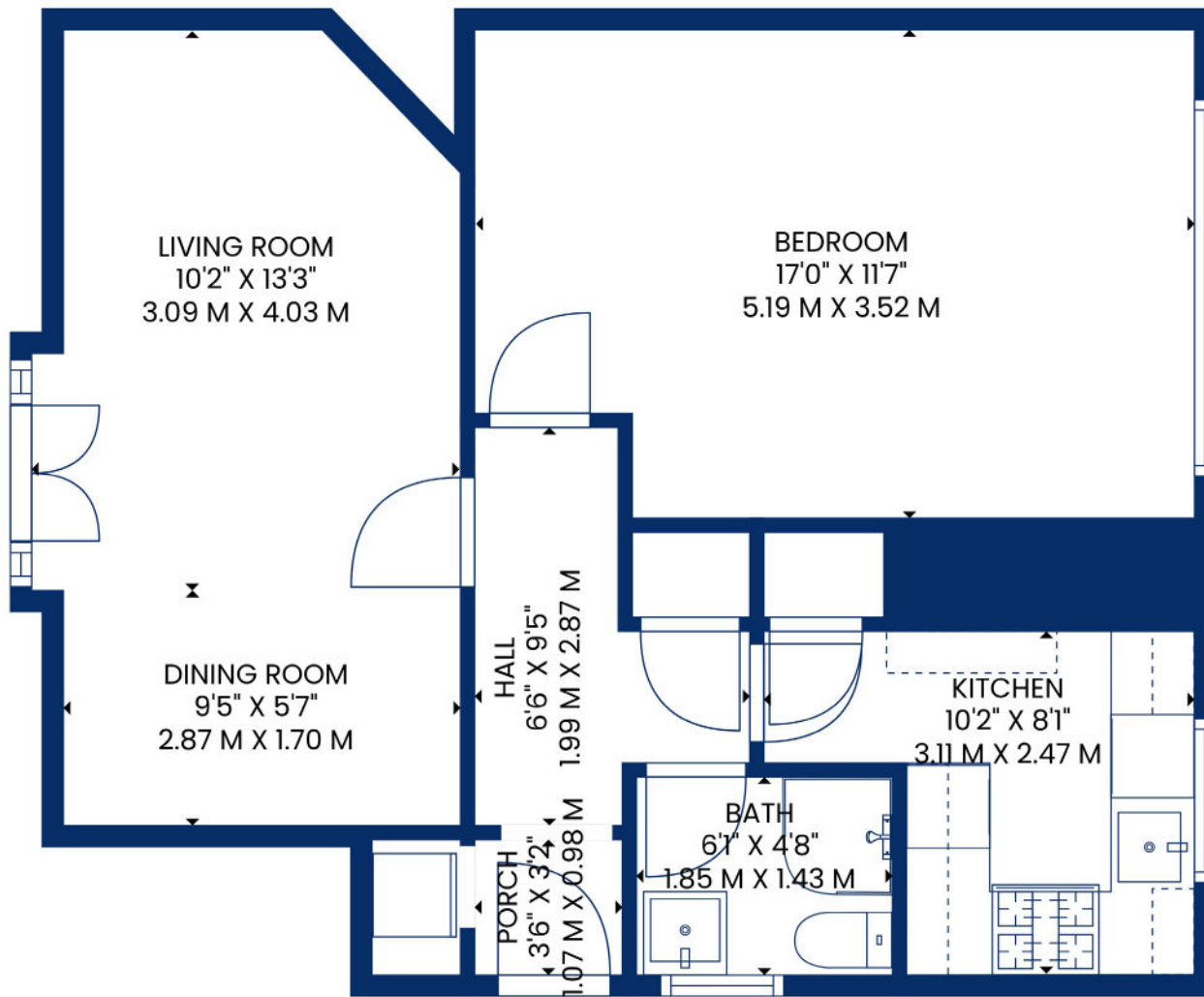
 1 Bedrooms

 53 sqm

 1 Public Rooms

 EPC Rating C





 51 Main Street, Prestwick
01292 471511

 52 Bank Street, Irvine
01294 317013



Any error, omission, or misstatement in any part of this schedule shall not entitle the purchaser(s) or vendor(s) to entitlement to compensation or damages, nor in circumstances to give either party any cause for action. The selling agents have not tested services, equipment or fittings and are therefore unable to comment on their condition. Potential buyers are requested to contact their solicitor or surveyor if further clarification is required. Measurements are approximate for guidance purposes only and have been taken by a sonic beam and are measured from wall to wall at the widest point unless otherwise indicated. Photographs are reproduced for general information and it must not be inferred that any item is included in the sale.