



  
**lomond**  
make yourself a home

25 Witchknowe Court, Kilmarnock KA1 4LF



## Accommodation

This modern built spacious three bedroom mid terraced property positioned within a purpose built development in the popular Bellfield area of Kilmarnock benefits from neat and tidy accommodation including a spacious dining kitchen and landscaped garden.

Step inside, and you'll be greeted by a spacious and sunlit interior. The ground floor comprises a welcoming reception hallway, complete with a staircase leading to the upper floor. From here, you'll have easy access to the main lounge. The lounge seamlessly flows into the dining-sized kitchen, equipped with a range of wall and floor-mounted units and integrated appliances. It's the perfect space for culinary creativity and entertaining guests. Heading to the upper floor, you'll find three generously sized bedrooms, each boasting the convenience of built-in wardrobes. This practical feature adds to the home's overall functionality. Completing the accommodation is the main family bathroom, complete with a WC, wash hand basin, and a bath with a shower overhead—a tranquil space to unwind and refresh. Stepping outside, the property showcases its well-maintained exterior. You'll find extensive gardens both at the front and rear, featuring a raised deck and a lawn area bordered by secure fencing. It's an inviting space to enjoy outdoor activities, soak up the sun, or simply relax in the serenity of your private space.

## Situation

Bellfield is a residential suburb located in the east of Kilmarnock. It is situated close to the town center and offers a range of amenities, including shops, schools, and public transport links. The area also features a number of parks and green spaces, making it an attractive choice for families and those seeking a quieter residential area.

- Spacious Mid Terrace Villa
- Three Bedrooms
- Lovely Dining Sized Kitchen
- Large Landscaped Gardens
- Close to a Range of Amenities
- Nearby to M77 Motorway Link



 3 Bedrooms

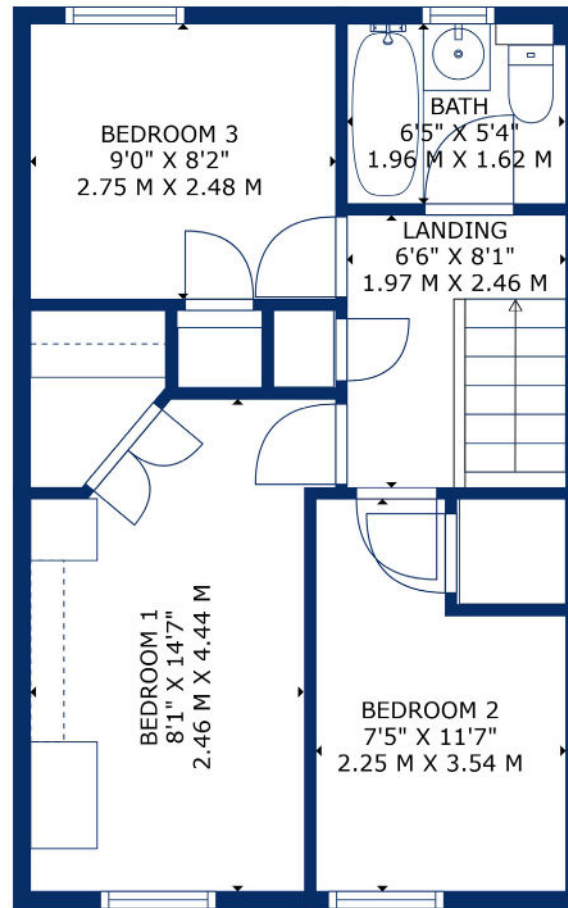
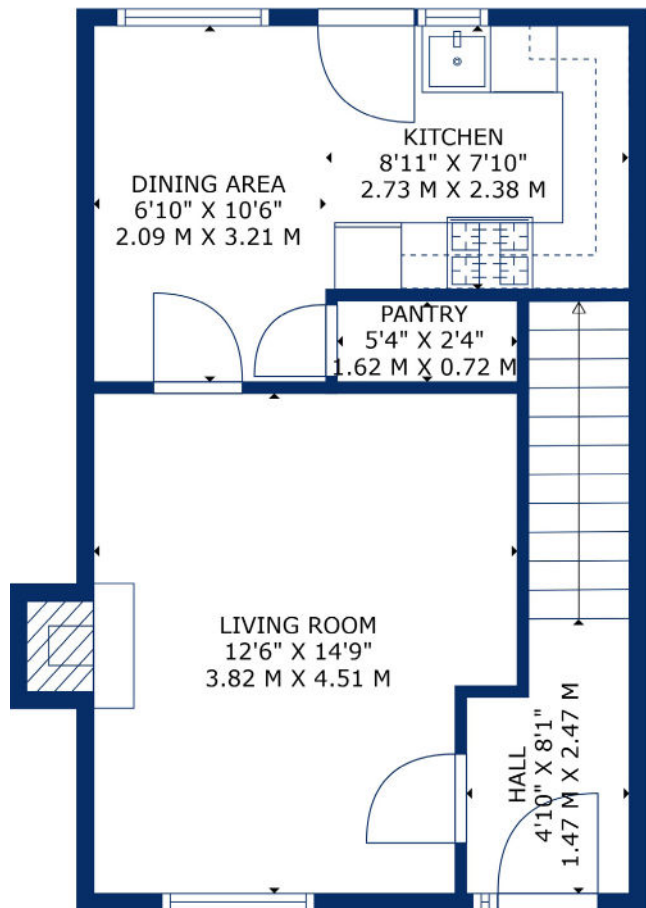
 75 sqm

 2 Public Rooms

 EPC Rating C

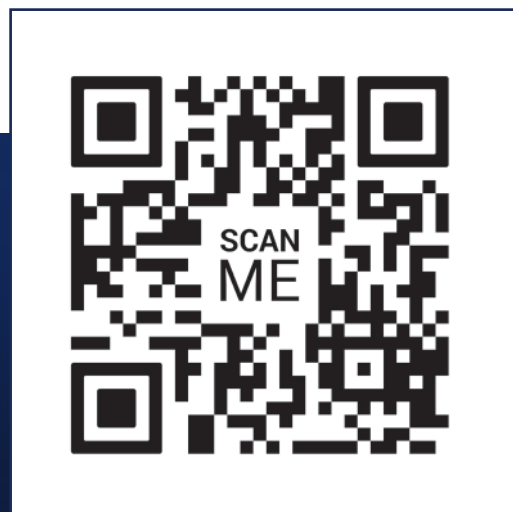






 **51 Main Street, Prestwick**  
**01292 471511**

 **52 Bank Street, Irvine**  
**01294 317013**



Any error, omission, or misstatement in any part of this schedule shall not entitle the purchaser(s) or vendor(s) to entitlement to compensation or damages, nor in circumstances to give either party any cause for action. The selling agents have not tested services, equipment or fittings and are therefore unable to comment on their condition. Potential buyers are requested to contact their solicitor or surveyor if further clarification is required. Measurements are approximate for guidance purposes only and have been taken by a sonic beam and are measured from wall to wall at the widest point unless otherwise indicated. Photographs are reproduced for general information and it must not be inferred that any item is included in the sale.