




lomond
make yourself a home

32 Dundonald Crescent, Irvine KA11 5AX

Accommodation

Extended to the rear, 32 Dundonald Crescent is a mid terrace villa comprising two double bedrooms, with lounge, conservatory, kitchen, family bathroom, and utility room. Externally the property boasts stunning countryside/golf course views, with easily maintained south facing gardens to the rear, and residents parking to the front.

In summary the property layout extends to an entrance vestibule with stairs rising to the upper level. The lounge is spacious stretching front to back, with neutral décor, and in turn allows access to the large conservatory. The conservatory offers views of the nearby countryside, and garden. To the rear of the property the kitchen is a recent upgrade, with floor and wall mounted units, free standing cooker, and integrated hood. Off the kitchen there is a utility room.

The upper level houses two double bedrooms and a recently fitted family bathroom with bath, over shower, WC and WHB, all finished to modern tiling. Both bedrooms feature good storage.

Externally- To the front the garden is laid to a section of lawn with pathway to the front door. To the rear the garden is laid to a combination of lawn, with decorative chips, and timber fence. A timber shed completes the rear garden.

Situation

Dundonald Crescent is a residential area, with the Auchengate area. Both Irvine and Troon town centres are close by and provide access to a range of amenities including supermarkets, bars, restaurants and town centre shopping. There are a number of local primary and secondary schools within the greater Troon/Irvine area.

- Mid Terrace Villa
- Two Double Bedrooms
- Private Rear Garden
- Countryside/ Golf Course Views
- Conservatory
- Spacious Lounge
- Recently Fitted Bathroom & Kitchen
- Double Glazing



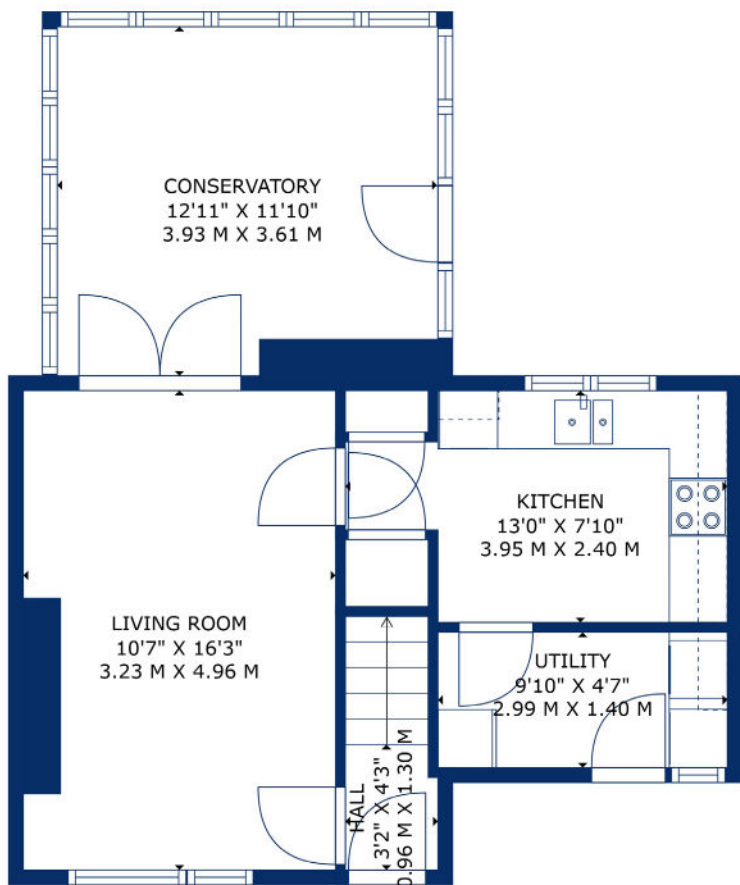
 2 Bedrooms

 73 sqm

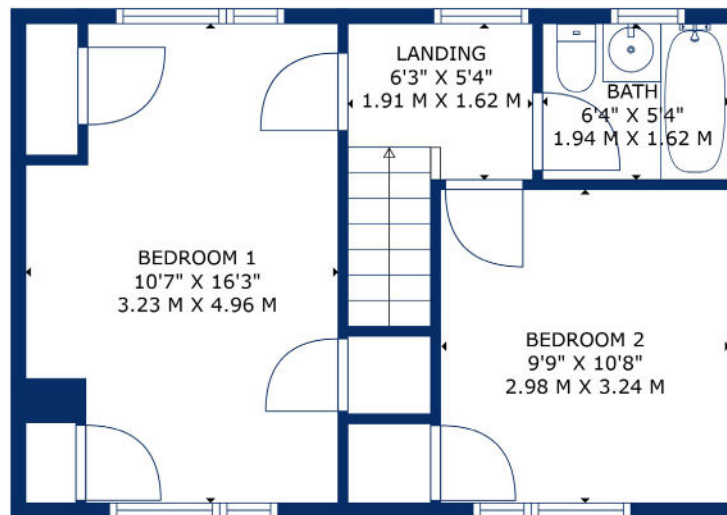
 2 Public Rooms

 EPC Rating C





FLOOR 1



FLOOR 2



51 Main Street, Prestwick
01292 471511

52 Bank Street, Irvine
01294 317013



Any error, omission, or misstatement in any part of this schedule shall not entitle the purchaser(s) or vendor(s) to entitlement to compensation or damages, nor in circumstances to give either party any cause for action. The selling agents have not tested services, equipment or fittings and are therefore unable to comment on their condition. Potential buyers are requested to contact their solicitor or surveyor if further clarification is required. Measurements are approximate for guidance purposes only and have been taken by a sonic beam and are measured from wall to wall at the widest point unless otherwise indicated. Photographs are reproduced for general information and it must not be inferred that any item is included in the sale.