



lomond

make yourself a home

5 Witchknowe Court, Kilmarnock KA1 4LF

Accommodation

This spacious, modern three-bedroom mid-terraced property is located in the popular Bellfield area of Kilmarnock, within a purpose-built development. It offers well-organized living spaces, including a roomy dining kitchen and an enclosed rear garden.

Upon entering, you'll be welcomed by a bright and generously sized interior. The ground floor features a welcoming reception hallway with a staircase leading to the upper floor. From there, you'll easily access the main lounge. The lounge seamlessly connects to the dining-sized kitchen, which is equipped with a variety of wall and floor-mounted units, along with integrated appliances. This space is perfect for both culinary creativity and entertaining guests.

Heading to the upper floor, you'll discover three generously sized bedrooms, each boasting the convenience of built-in wardrobes, enhancing the overall functionality of the home. The main family bathroom on this floor is complete with a WC, wash hand basin, and a bath with a shower overhead.

Stepping outside, the property has enclosed gardens both at the front and rear together with residents parking. Although needing some general upgrading the property offers fantastic potential as a family home.

Situation

Bellfield is a residential suburb situated to the east of Kilmarnock. It is conveniently close to the town center and offers a range of amenities, including shops, schools, and accessible public transport links. The area also boasts several parks and green spaces, making it an attractive choice for families and those seeking a tranquil residential environment.

- Spacious Mid Terraced Villa
- Three Bedrooms
- Dining Sized Kitchen
- Large Landscaped Gardens
- Close to Range of Amenities
- Nearby to the M77 Motorway Link



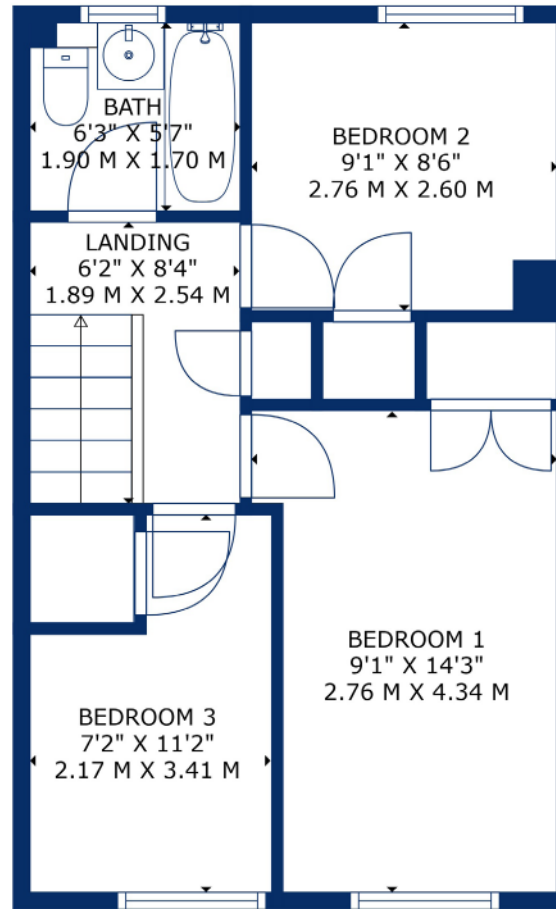
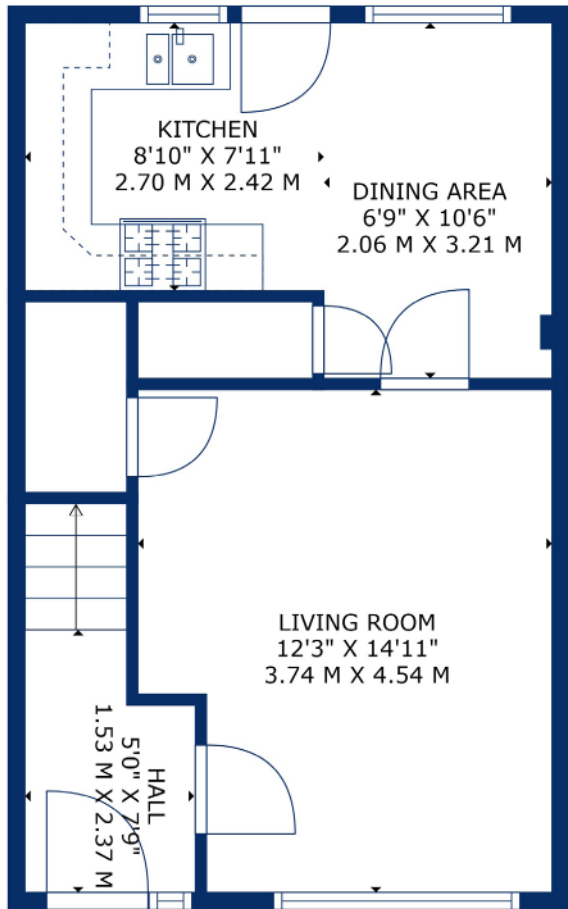
 3 Bedrooms

 75 sqm

 1 Public Rooms

 EPC Rating C





51 Main Street, Prestwick
01292 471511



52 Bank Street, Irvine
01294 317013



Any error, omission, or misstatement in any part of this schedule shall not entitle the purchaser(s) or vendor(s) to entitlement to compensation or damages, nor in circumstances to give either party any cause for action. The selling agents have not tested services, equipment or fittings and are therefore unable to comment on their condition. Potential buyers are requested to contact their solicitor or surveyor if further clarification is required. Measurements are approximate for guidance purposes only and have been taken by a sonic beam and are measured from wall to wall at the widest point unless otherwise indicated. Photographs are reproduced for general information and it must not be inferred that any item is included in the sale.